



**COMMONWEALTH OF KENTUCKY  
TRANSPORTATION CABINET**  
Frankfort, Kentucky 40622  
[www.transportation.ky.gov/](http://www.transportation.ky.gov/)

**Matthew G. Bevin**  
Governor

**Greg Thomas**  
Secretary

May 15, 2017

CALL NO. 201  
CONTRACT ID NO. 174122  
ADDENDUM # 1

Subject: Laurel County, 121GR17T011-FE01 & HSIP  
Letting May 26, 2017

(1)Added - Note - Pages 1-2 of 2

Proposal revisions are available at <http://transportation.ky.gov/Construction-Procurement/>.

If you have any questions, please contact us at 502-564-3500.

Sincerely,

A handwritten signature in cursive script that reads "Rachel Mills".

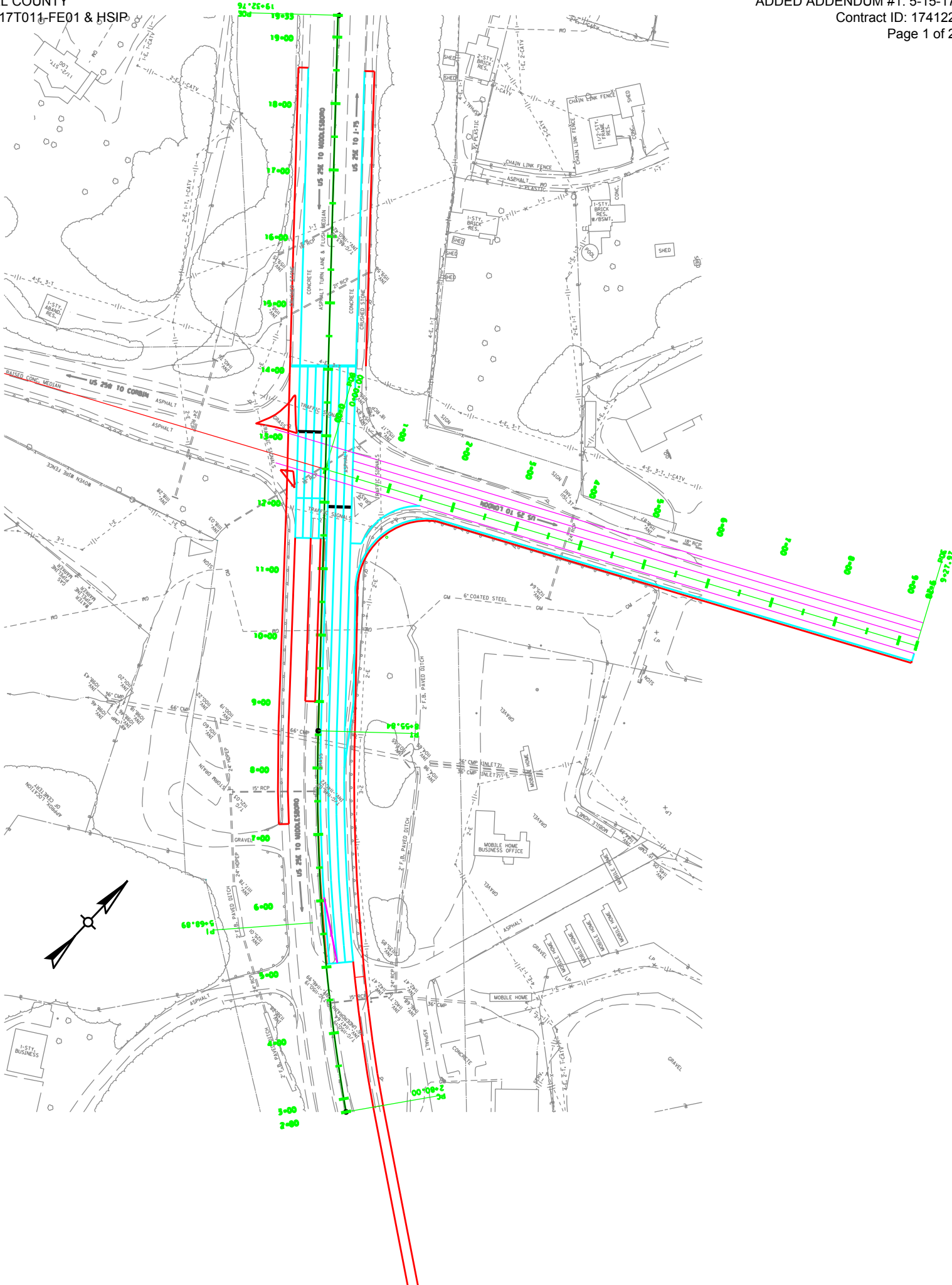
Rachel Mills, P.E.  
Director  
Division of Construction Procurement

RM:ks  
Enclosures



An Equal Opportunity Employer M/F/D

US 25E Layout Sheet



**CID 17-4122**  
**US 25 JPC Project**

**PI Sta. 5+68.89**

Northing – 3515433.5554

Easting – 5418469.9671

Radius – 2864 feet

Delta - 11°31'12" Right

Degree of Curvature - 2°00'02"

Length – 575.84 feet

**PT Sta. 8+55.84**

Northing – 3515449.8916

Easting – 5418864.1259

**Intersection Point Sta. 12+49.48**

Northing – 3515439.0660

Easting – 5419257.6228

**Point of End Sta. 19+32.76**

Northing – 3515420.2753

Easting – 5419940.6462